

SkyPDF Driver



Users Guide

Ver4.0



Table of Contents

Required System Environment.....	1
Online Help.....	1
Installation for SkyPDF Pro.....	2
Uninstallation SkyPDF Pro.....	7
 SkyPDF Pro 4.0 Settings.....	 9
 Convert to PDF (in [printing] command).....	 11
 Convert to PDF (by drag and drop).....	 12
 Convert to PDF (from right-click menu).....	 13
 Convert to PDF (from tool button).....	 14
 Convert to PDF with bookmark and annotation link.....	 16
 Change SkyPDF Pro default settings.....	 18
 Various Page Settings.....	 19
Paper Size Settings	19
Paper Orientation Settings.....	20
Margin Settings.....	21
Resolution Level Settings.....	22
Zoom Level Settings.....	23
Save File Settings.....	24
Add the Date to the Filename	24
Specify Location to Save File	25
Specify the Location for Save Files.....	26
Settings When File Already Exists	27
Open File after Saving	28
Delete Blank Page.....	29
Web Optimization.....	30
Embed Thumbnail Images	31

Compression Option Settings	33
Reset the Compression Option Settings	37
Output the PDF file in text format	38
Embedding Fonts	39
Adding Watermark	42
Converting PDF file as PDF/A-1b documents	46
Adding Document Information	49
Automatically Converting URLs and Mail address to PDF Weblinks	50
Confirming the Product and the User Information Details for SkyPDF Pro	51

Required System Environment

The following environment is required to install SkyPDF Pro.

OS	Japanese/English/Chinese(Simplified/Traditional) Microsoft® Windows® XP Professional / Home Edition SP3 or later (x86) Japanese/English/Chinese(Simplified/Traditional) Microsoft® Windows® Vista Ultimate / Business/ Enterprise / Home Premium / Home Basic (x86) Japanese/English/Chinese(Simplified/Traditional) Microsoft® Windows® 7 Ultimate / Enterprise/ Professional / Home Premium (x86, x64)
CPU	Pentium4 1GHz or more (based on the recommendation of the OS)
Memory	Over 512MB (based on the recommendation of the OS)
Hard Disc Storage	Over 50MB

The following applications are confirmed to operate with SkyPDF Pro:

- Microsoft Word 2003/2007/2010
- Microsoft Excel 2003/2007/2010
- Microsoft PowerPoint 2003/2007/2010
- Microsoft Internet Explorer 6.0/7.0/8.0
- Microsoft Visio 2003/2007/2010
- JUSTSYSTEM Ichitaro 2008/2009/2010/2011

You can convert to PDF file from the other than above applications, however, may not correctly convert depending on type of document and application.

Online Help

See the online help to confirm description of each items or buttons during operation in SkyPDF Pro. Click [Online manual] button in SkyPDF Version tab.

If you click the [?] button in the upper light side of user interface to display the brief explanation of each items and function.

Installation for SkyPDF Pro

Install SkyPDF Pro on a computer.

■Attention■

*When installing SkyPDF Pro first, log in to an account with Administrator authority before installing.

*Terminate MS Office application.

*Uninstall SkyPDF by control panel if you used SkyPDF former version 3.50.

1. When installing from a CD-ROM, insert the CD-ROM into the CD-ROM drive.

■Note■

Double click on SkyPDF.exe inside a folder or inside the CD-ROM.

When downloading, unpack (open) the file if it has been compressed, and then double click on setup.exe inside the folder.

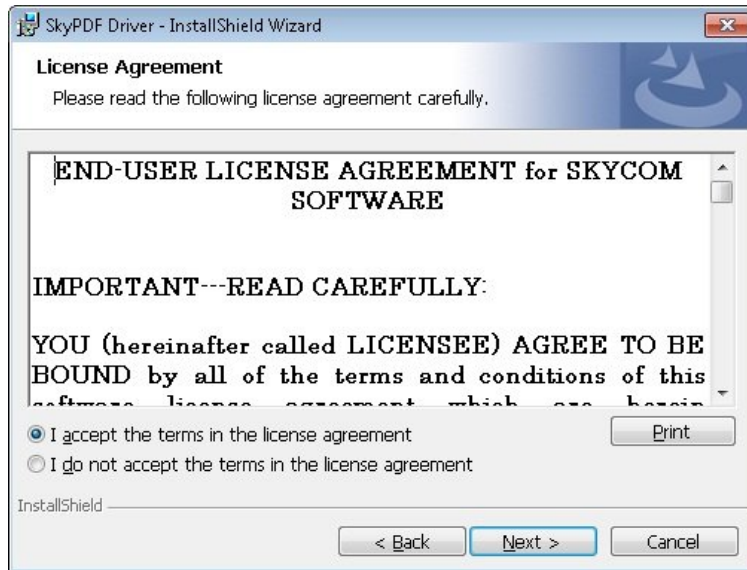
Select language at first when Setup language screen appears, and then click [OK].



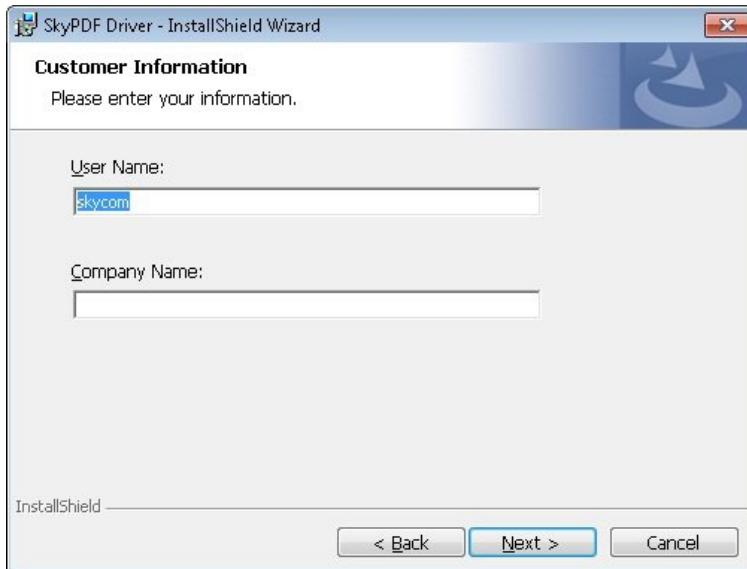
2. When the welcome screen appears, click [Next].



3. When [License Agreement] screen appears, read the content carefully then click [I accept the terms in the license agreement], and then click [Next].



4. When the [Customer Information] screen appears, enter your name, company name, and then click [Next].



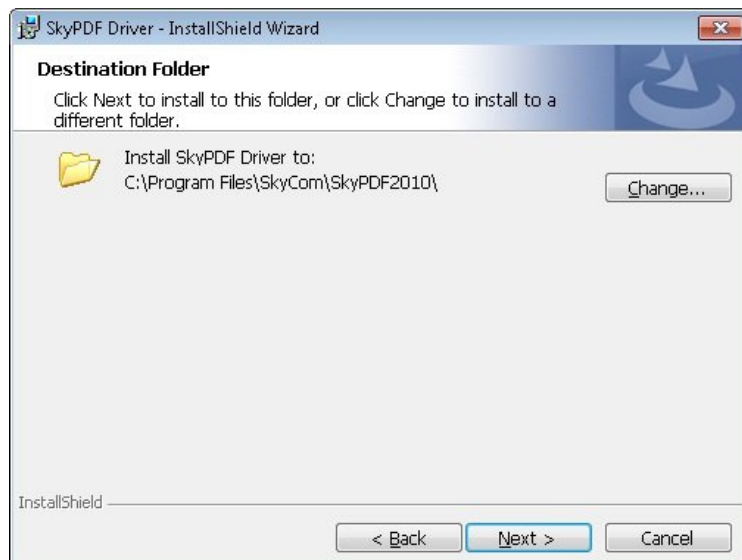
5. When [Choose Default Folder] appears, select the folder to save the SkyPDF Driver PDF files, and click Next. When select [Specified location] for saving PDF files, click Browse to select the PDF Output Folder.



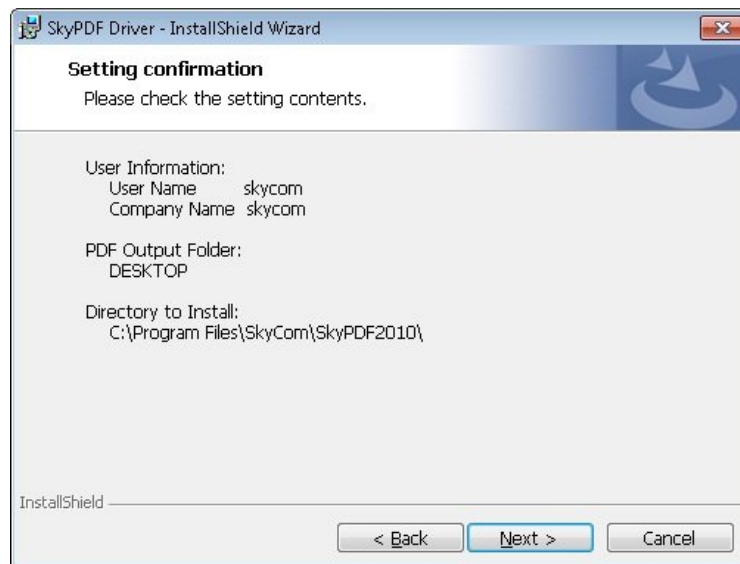
■Note■

When SkyPDF Driver creates a PDF file, it will be saved to the location specified here, if you do not check Specify the Location to Save File. You can change the folder to save to, later.

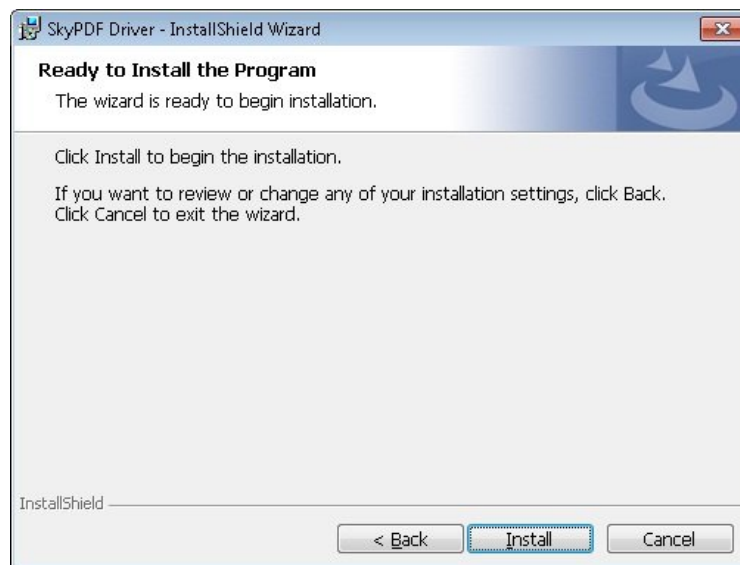
6. When the [Destination Folder] screen appears, click [Change] if necessary, and select the folder to install product into, then click [Next].



7. When the [Setting confirmation] screen appears, check the setting content then click [Next].



When the [Ready to Install the Program] screen appears, click [Install].

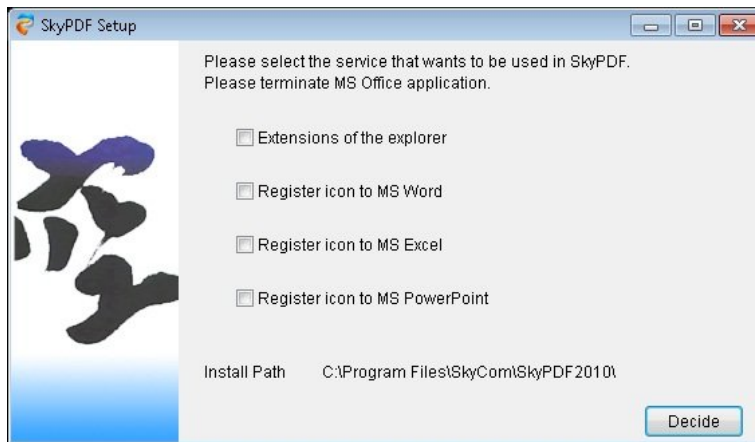


Installation will start.

8. Please select the service that wants to be used in SkyPDF Driver:

Confirm to terminate MS Office application again.

Please click [Decide].



■Note■

*You can change the above settings after installation. Refer to “SkyPDF Pro 4.0 Settings” in detail.

*Only [Extensions of the explorer] is available in PC without Microsoft Office. If you check in the boxes [Register icon to MS Word/Excel/PowerPoint], there is no harmful effect in SkyPDF performance.

* Do not check in the boxes [Register icon to MS Word/Excel/PowerPoint] in use of Microsoft Office 2000, or Office itself cause some matters.

When the installation complete screen appears, click [Finish].



Uninstallation SkyPDF Pro

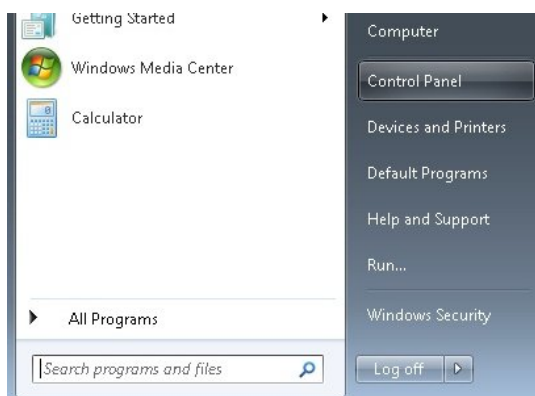
Uninstall SkyPDF Pro on a computer: by the control panel.

Windows XP:

1. Go to Start, and click on settings.
2. Go to your control panel.
3. Click on the Add/Remove program icon.
4. See SkyPDF Pro in the list of programs, and select it.
5. Click uninstall, and confirm whether the program is removed.
6. Uninstall will start, and then automatically completed.

Windows Vista/7:

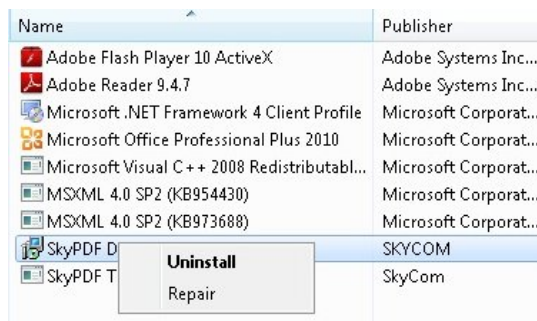
1. Go to Start, and open your Control Panel.



2. Go to Programs, or click Programs and Features.

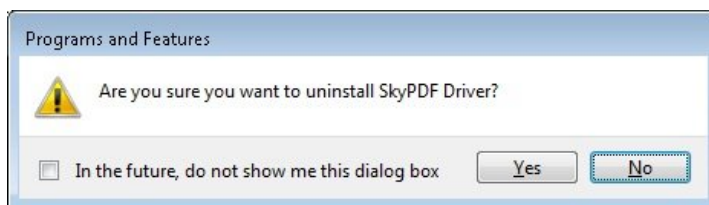


3. See SkyPDF Pro in the list of programs, and select it.



Click Change or Repair, or Uninstall.

5. Confirm whether the program is removed.



6. Uninstall will start, and then automatically completed.

SkyPDF Pro 4.0 Settings

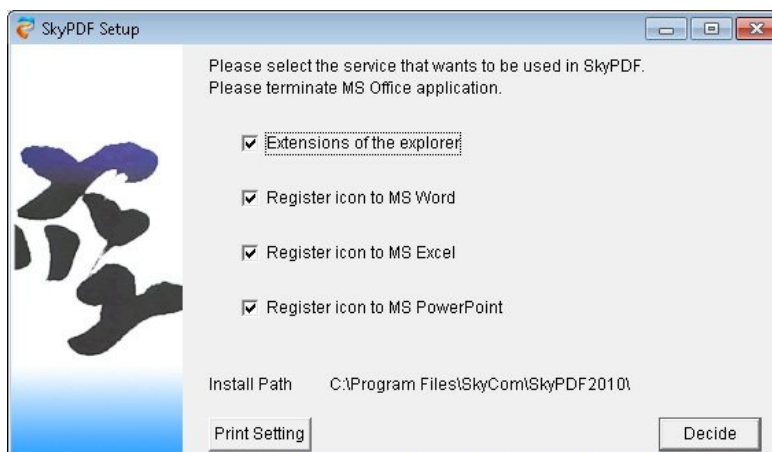
Display [SkyPDF Setup].

1. Go to Start, and display all installed programs.
2. Select SkyCom, then click SkyPDF, SkyPDF Driver/
3. You will see the SkyPDF Setup dialog.

■Attention■

*When installing SkyPDF Pro at first, log in again to an account with Administrator authority before installing.

* Confirm to terminate MS Office application.



Extensions of the explorer:

Check here, if you need to convert to PDF file from right-click menu.

Register icon to MS Word/Excel/PowerPoint

Check them, if you convert to PDF file from MS Word/Excel/PowerPoint from tool button in application. It contributes to usability.

Print Settings:

Click [here](#) to display [SkyPDF Pro Driver Settings]. Refer to Change SkyPDF Pro default settings in detail.

■Note■

*Only [Extensions of the explorer] is available in PC without Microsoft Office. If you check in the boxes [Register icon to MS Word/Excel/PowerPoint], there is no harmful effect in SkyPDF performance.

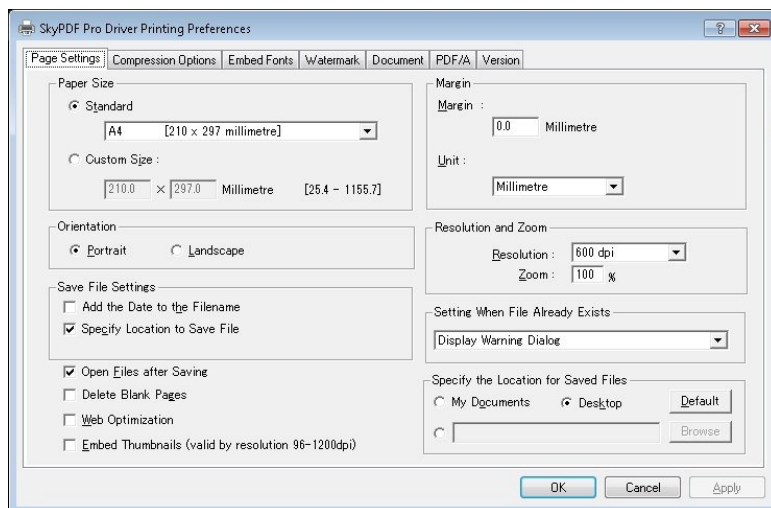
* Do not check in the boxes [Register icon to MS Word/Excel/PowerPoint] in use of Microsoft Office 2000, or Office itself cause some matters.

Convert to PDF (in [printing] command)

Use SkyPDF to convert to PDF file in printing command, same with printing as paper.

See the following example of Word. Names of items may differ depending on the application

1. Open MS-Office (Word) document, and go to Print in File menu.
2. Select SkyPDF Pro Driver in the printer name box.
3. Click Property to change settings for page, font embed, security.
4. Change settings in SkyPDF Pro Driver Settings dialog.



Refer to pages after Various Page Settings to confirm details of settings.

5. Click OK after settings on SkyPDF Pro Driver.

■Attention■

It is the temporary settings to change settings from printing command. Refer to Change SkyPDF Pro default settings to stabilize the settings.

6. Click OK or Print to convert PDF file.
7. Name file and specify folder to save the converted PDF file if dialog box for saving appears.
You can also edit the file name and save.

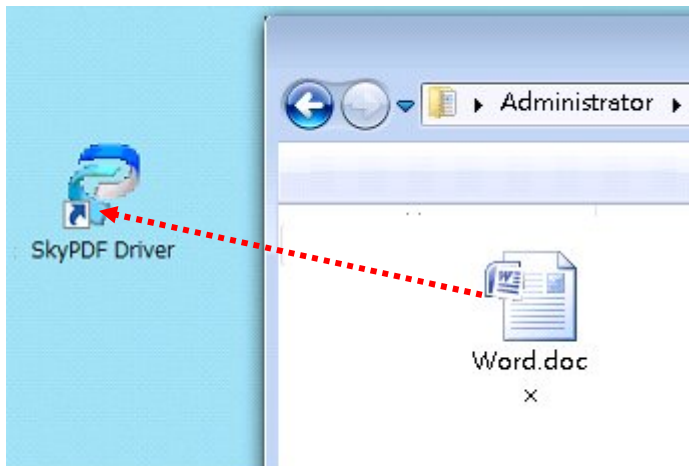
■Attention■

PDF file converted by SkyPDF Pro is compiled with PDF1.6 requirements. Use the compliant PDF Viewer for the requirement to open the files.

Convert to PDF (by drag and drop)

Convert to PDF file to drag and drop to the shortcut icon of SkyPDF Driver on desktop.

1. Drag and drop MS-Office document to SkyPDF Driver shortcut icon on your desktop.



[Drag and Drop] = click the object (ex.file) and move to the desired location, then release mouse.

*Automatically start converting PDF file after opening appropriate application.

2. Name file and specify folder to save the converted PDF file if dialog box for saving appears.
You can also edit the file name and save.

■Attention■

It may not convert to PDF file correctly depending on the contents of the file types and applications. In case of fail, convert to PDF file in printing command.

Convert to PDF (from right-click menu)

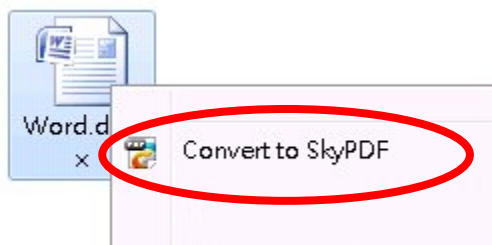
Convert to PDF file from right-click menu.

■Note■

Set separately to be the selection in the list of context menu. Refer to SkyPDF Pro 4.0 settings.

1. Right-click on the object file, and select Convert to SkyPDF in context menu.

*Automatically start converting PDF file after opening appropriate application



2. Name file and specify folder to save the converted PDF file if dialog box for saving appears. You can also edit the file name and save.

■Attention■

It may not convert to PDF file correctly depending on the contents of the file types and applications. In case of failing, convert to PDF file in printing command.

Convert to PDF (from tool button)

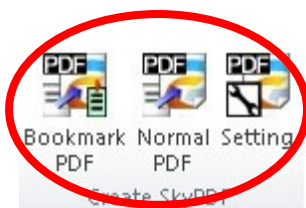
Tool buttons are added in Microsoft Word/Excel/PowerPoint. Only you do is one-click the tool button to convert to PDF file. Contribute to usability.

■Note■

Set separately to be the selection in the list of context menu. Refer to SkyPDF Pro 4.0 settings.

■ Office2007/2010

1. Need Visual Basic for Applications installed if custom installation was selected when you installed MS-Office applications.
2. Go Menu>Option (in each application, Excel/Word/PowerPoint), and check Show development ribbon.
3. Reboot the application. If you set in an application, the display settings are reflected.



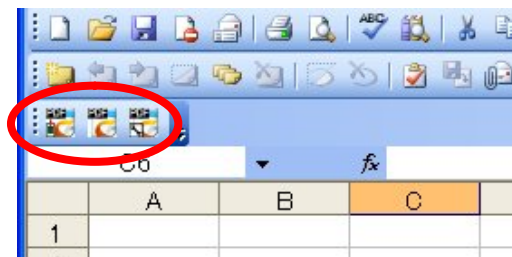
4. Refer to Office2003.

■Note■

Click Settings button to change settings.

■ Office 2003

1. Click Normal PDF of the tool buttons in toolbar:



*Automatically start converting PDF file after opening appropriate application

■Note■

The above tool button is showed in registered application in SkyPDF Pro Setup. Refer to SkyPDF Pro 4.0 Settings to confirm in details.

2. Name file and specify folder to save the converted PDF file if dialog box for saving appears. You can also edit the file name and save.

■Attention■

It may not convert to PDF file correctly depending on the contents of the file types and applications. In case of failing, convert to PDF file in printing command.

*It is available to convert PDF file in only selected one sheet in Excel.

Convert to PDF with bookmark and annotation link

Tool buttons are added in Microsoft Word/Excel/PowerPoint. Only you do is one-click the tool button to convert to PDF file with bookmark and annotation link. Contribute to usability.

Bookmark is the table of contents in the left side of PDF file. You can jump the specified page or area in the PDF file when you click each of contents.

Annotation link means PDF reflection of hyperlink which is set in office application. You can also jump the specified page or area as well as bookmark.

■ Attention ■

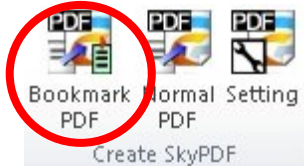
- * Annotation link function is not available in Excel.
 - * It doesn't work in PowerPoint document for read only.
 - * It is not guaranteed in PowerPoint document with tracked change.
-
- * One form of word, "Header 1" is detected and set as bookmark.
(It is only dealt with the form starting with "Header1-9".)
 - * Sheet name is detected and set as bookmark in Excel.
(It is only selected one sheet to be dealt with.)
 - * Slide Title is detected and set as bookmark in PowerPoint.
(In case of no slide title, slide number is set as bookmark.
 - * Hyperlink information is detected and set annotation link in Word/PowerPoint by clicking
Bookmark PDF button. Excel is not available.

1. Click Bookmark PDF button in toolbar of MS-Office application.

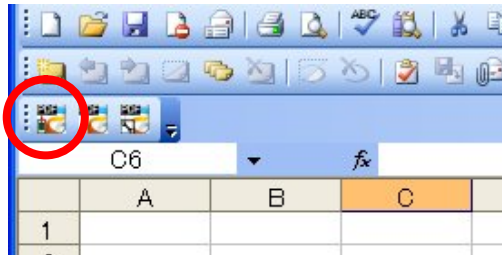
■Note■

The above tool button is showed in registered application in SkyPDF Pro Setup. Refer to SkyPDF Pro 4.0 Settings to confirm in details.

■ Office2007/2010



■ Office2003



*Automatically start converting PDF file after opening appropriate application

2. Name file and specify folder to save the converted PDF file if dialog box for saving appears. You can also edit the file name and save.

■Attention■

Click Bookmark PDF button to set multiline hyperlink in converted PDF. The function is available in 1 page, not multi pages.

Change SkyPDF Pro default settings

After installation of SkyPDF Pro, you can convert to PDF files in default settings. Change default settings from the control panel to hold on the individual settings. It doesn't need to change settings accordingly.

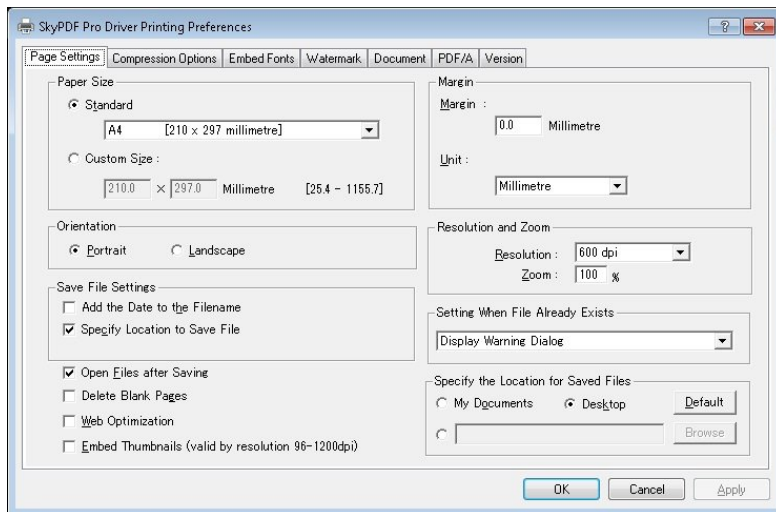
1. (Windows XP) Go Start>Control Panel>Printer and fax folder.

(Windows Vista / 7) Go Start>Control Panel>Printer or Device and Printer

*There are some difference depending on settings of display in Vista / 7. Adjust the each settings of your PC.

2. Right-click SkyPDF Pro Driver in the installed printer list, and then select Printer Settings.

3. Change various settings in each tab at your requests, and then press OK.



Refer to subsequent description of Various Page Settings to check the details of each section.

■Attention■

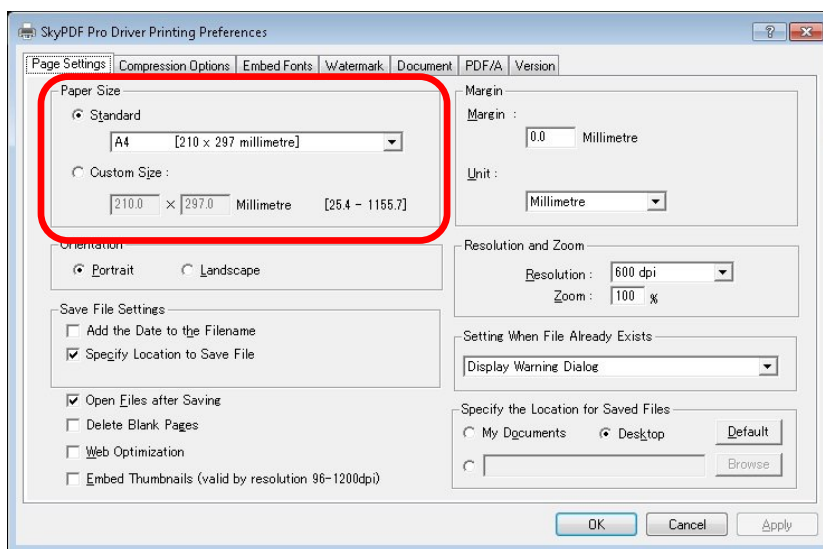
*The changed default settings of SkyPDF Pro Driver property is hold on for each user account in Windows.

Various Page Settings

You can specify the paper size, paper orientation and margin for the PDF files.

Paper Size Settings

To choose the paper size for the PDF file, you can select a standard size paper such as Letter, A4 etc. or specify a custom length and width.



Standard:

You can select the paper size from Letter / Legal / Tabloid / Postcard / A0 up to A5 / Executive / B2 up to B5. You can confirm the width and height of each size.

Custom Size:

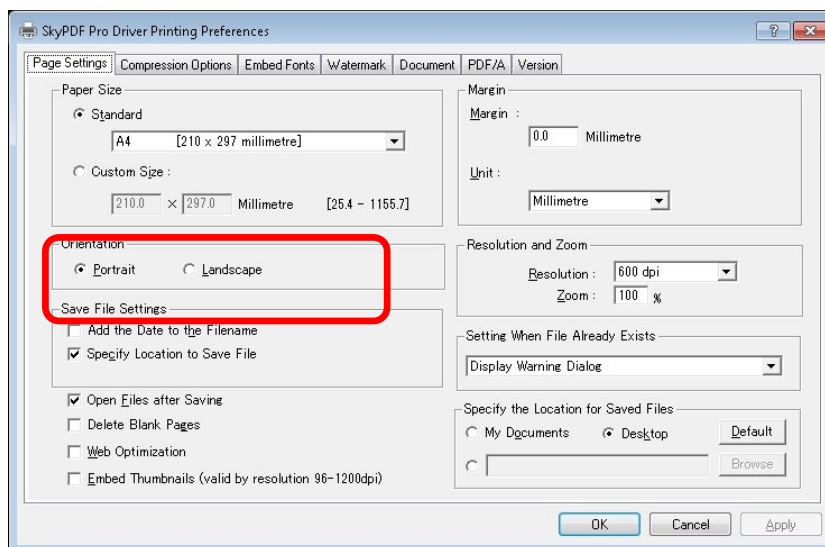
You can specify paper size entering width and height into Width x Height. The unit of measure can be changed using the Unit drop down list, if required.

■Note■

The paper size specified using Page Setup within the application, takes precedence over the paper size set here.

Paper Orientation Settings

You can select paper orientation from Portrait or Landscape.

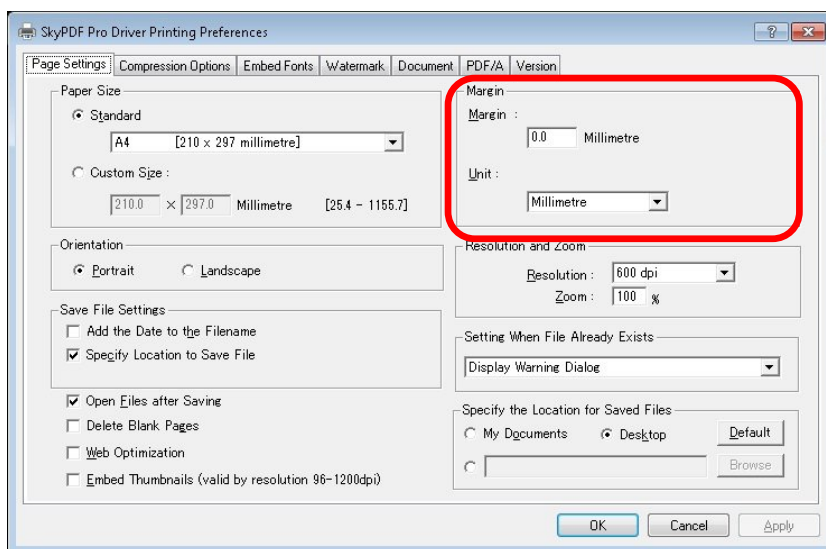


■Note■

The paper orientation specified using Page Setup within the application, takes precedence over the paper orientation set here.

Margin Settings

You can configure the margin setting.



Units:

You can select the unit of measure used in specifying paper or margin, from Inch/Point/Millimetre. If you change Units, the input value to the Paper Size and Margin will be changed automatically. Converted as 1 inch = 25.4 mil = 72 points.

Margin:

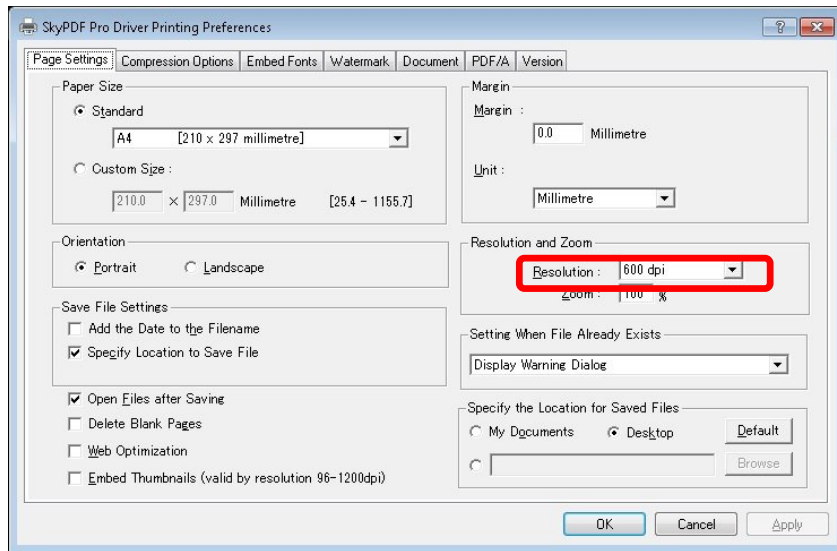
You can configure the margin setting at the top and left side of the page of the PDF file. The unit of measure can be changed using the Unit drop down list, if required.

■Note■

The margin specified here will be set inside of the margin that was set using Page Setup within the application. Therefore if you set a margin here to create the PDF file, then all the pages will move to lower right of the original, which may result in an overflow which will be removed or generated as separate pages.

Resolution Level Settings

You can configure the resolution and the zoom settings for the new PDF file.



You can select the resolution for the new PDF file from Screen, 96dpi, 150dpi, 300dpi, and 600dpi. Screen is 72dpi. Although the layout of the document will be accurate with higher resolutions, the file will usually grow in size.

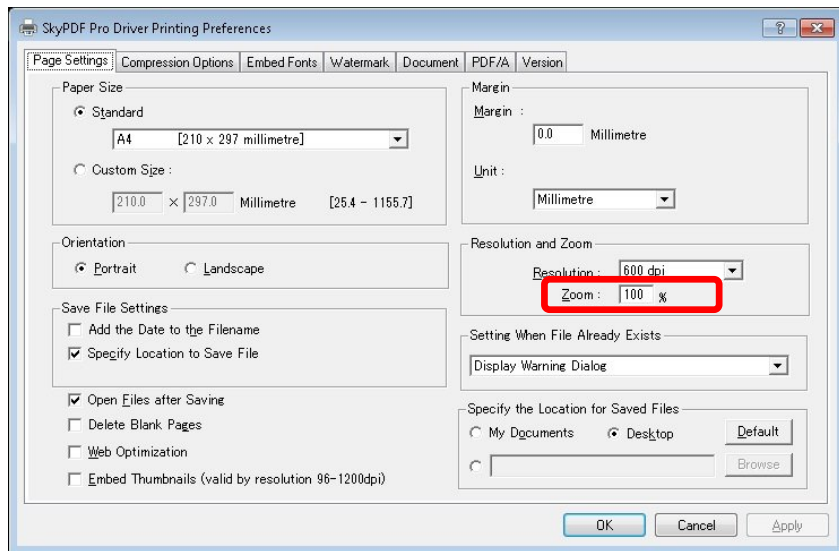
There would not be a problem in displaying the PDF file on Screen or 96dpi. However, when a resolution of less than or equal to 150dpi is specified, the contents of the page displayed by the application and the PDF file may be different (change in character spacing etc.).

■Attention■

Please specify a resolution of 300dpi or more when creating the PDF file to ensure the document layout integrity or to print with high quality.

Zoom Level Settings

You can specify the zoom level for the new PDF file.



You can specify the zoom level for the new PDF file.

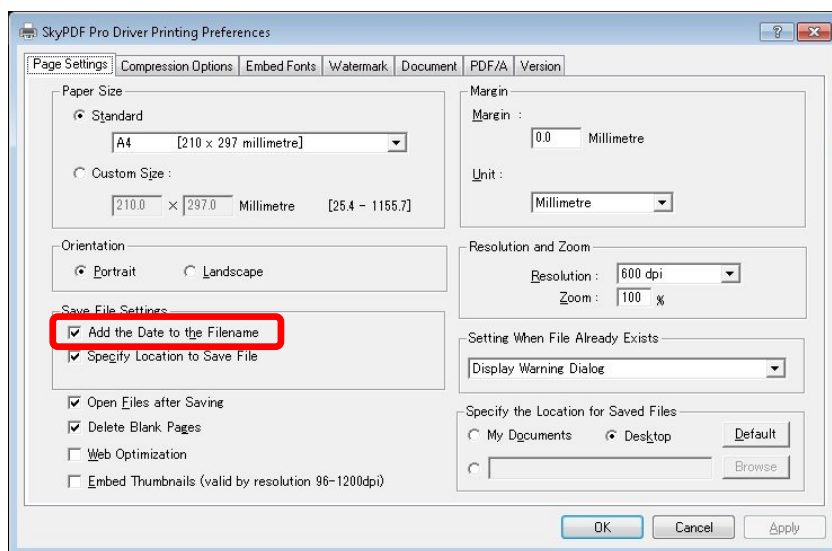
The zoom level set here will be applied to the contents of the original document. Since the zoom level can be set while displaying and printing the PDF file, it is not usually necessary to change the default value of 100% (original size).

The zoom setting does not affect the page size. If a PDF file is created with a zoom setting of 50%, the content of the document will be reduced 50% (to A5 size) and placed on an A4 size page. If a zoom of 200% is specified the content of the document will be increased 200%, and placed on an A4 size page but the overflowed area will be deleted or moved to separate pages.

Save File Settings

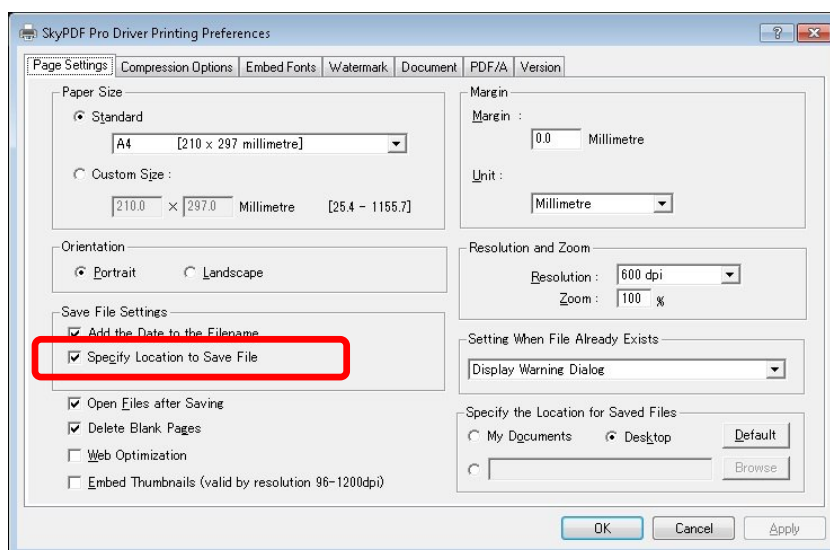
You can configure the settings for the file name of the new PDF file or the folder to save the file.

Add the Date to the Filename



Check here to append the date and time when the PDF file is created, automatically to the name of the new PDF file. For example, if a PDF file is created from an original document named ABC.doc at 15:31:08 on February 11th, 2005, then the name of the PDF file becomes "ABC20050211153108.pdf".

Specify Location to Save File



Check here, if you want to confirm or change the file name and the location to save the PDF file.

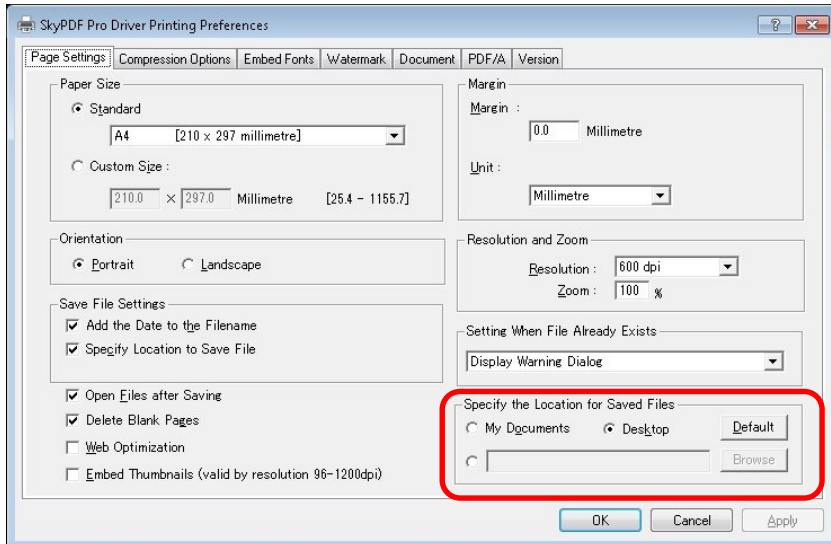
If you check Specify the Location to Save the File, Save PDF file as dialog box is displayed, and you can specify the file name and the folder to save the PDF file.

If you do not check Specify the Location to Save the File, the PDF file will be saved to the default folder which was specified at installation time, or the folder which was specified in Specify the Location for Saved Files pane. The PDF files are saved the same name as the original document (the part of the name before the file extension).

Specify the Location for Save Files

If you selected the Specify the Location to Save the File option, a Save As dialog will be displayed.

The Save PDF File As dialog box indicates the folder where the PDF file will be saved and the name of the file. Edit these as necessary and click Save.



My Documents:

Save the PDF files in "My Documents" folder.

Desktop:

Save the PDF files in "Desktop" folder.

Default:

Save the PDF files in the folder that was configured during installation.

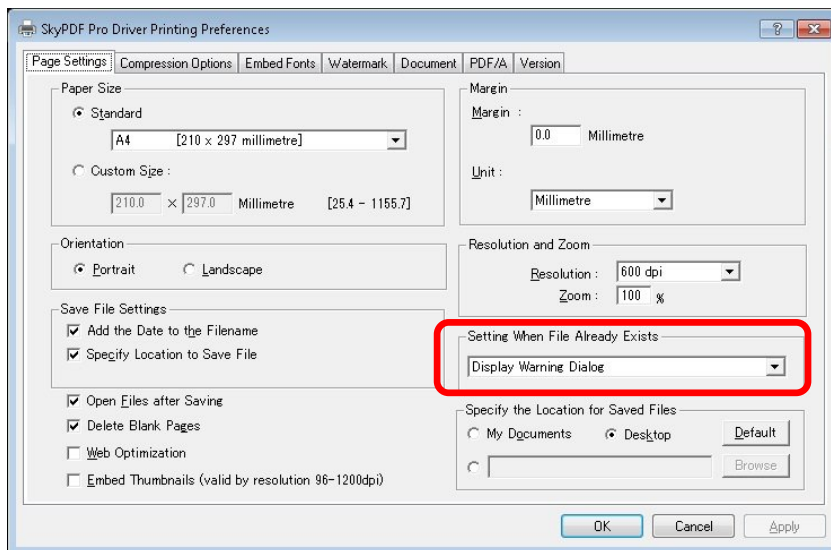
Text box (path to the folder):

If you want to specify a new save folder, select the button below My Documents to enter the path to the folder, or click Browse to select the folder.

If you did not select the Specify the Location to Save the File option, the PDF file will be stored in the default folder.

Settings When File Already Exists

You can select from the following procedures when a file with the same name already exists in the save to folder.



Select items	Details
[Display Warning Dialog]	A message appears, to confirm whether to overwrite the existing file with the same name.
[Overwrite]	The existing file is automatically overwritten.
[Save the File with Incremental Count]	The file will be saved with a sequence number 1, 2, appended automatically to the file name. For example, if the document ABC.doc is saved three times as a PDF file, without changing the file name, the saved PDF files will be ABC.pdf, ABC1.pdf, and ABC2.pdf.
[Append the PDF File to the Existing PDF File]	The content of the new PDF file is appended to the content of the existing file to make a single file. *Do not add PDF file after the secured PDF file.

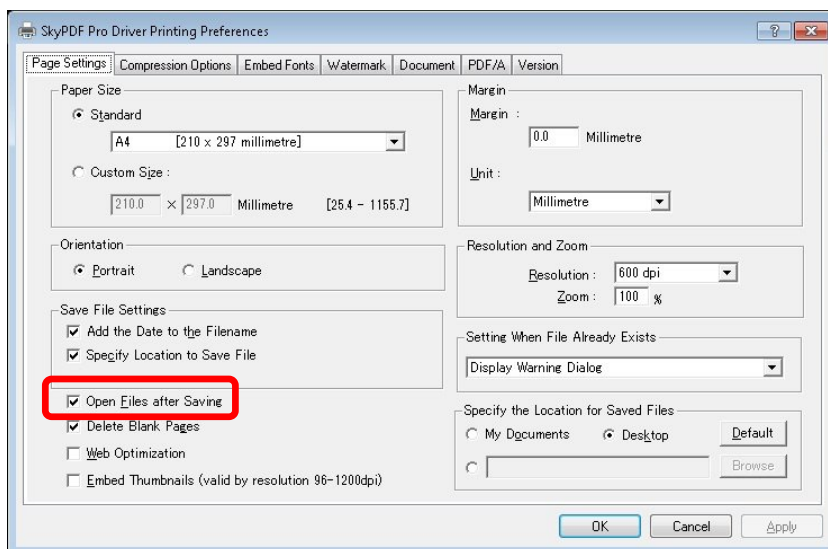
■Note ■

*If you select Overwrite or Append the PDF File to the Existing PDF File as default, please be careful when creating the new PDF file. It is possible for an important PDF file to be overwritten or the contents modified.

*If you convert PDF file as PDF/A-1b, msxml6 must be installed.

Open File after Saving

Check here to have the PDF file open automatically after it is created.

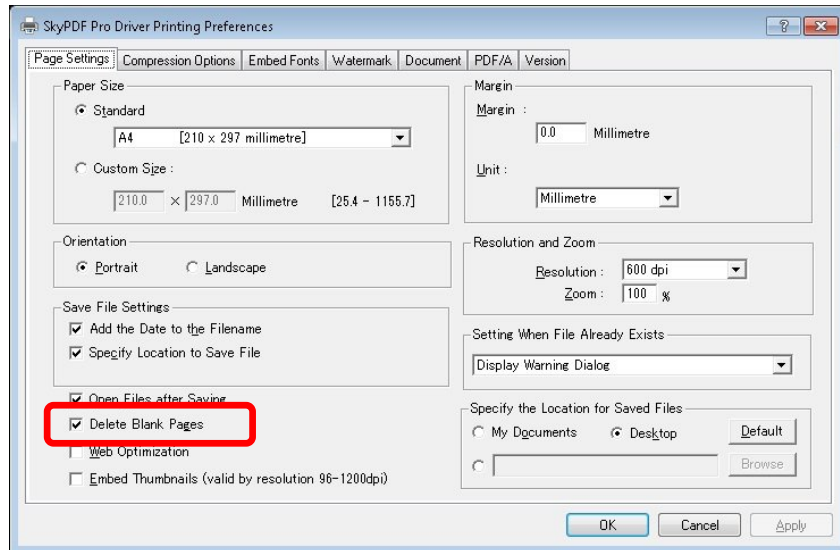


■Note■

If you selected the Specify the Location to Save the File option, a Save As dialog will be displayed. The Save PDF File As dialog box indicates the folder where the PDF file will be saved and the name of the file. Edit these as necessary and click Save.

Delete Blank Page

Check here to delete blank pages from the PDF file automatically when they are included in the original document.



■Attention■

*It is not deleted blank page in converted PDF even if there is a blank page in MS-PowerPoint.

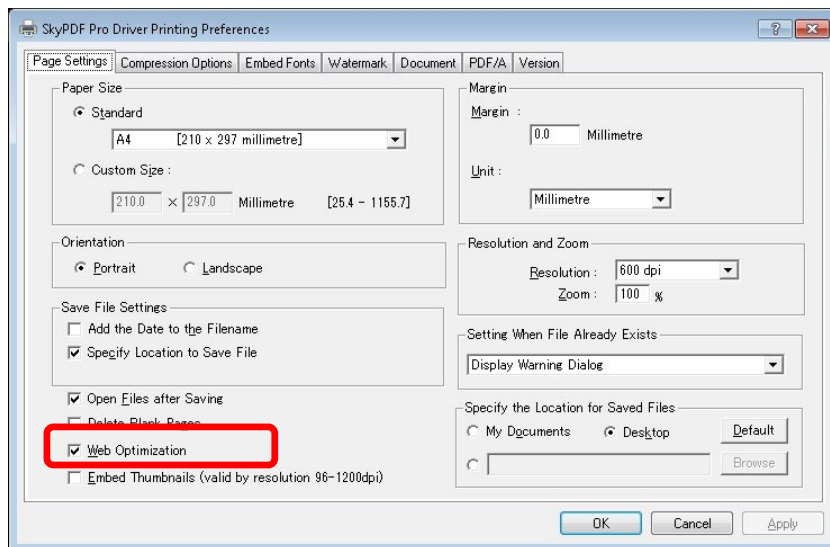
*It is not deleted blank page in converted PDF if the blank page is made by the Enter key in MS-Word. It is available for the blank page is made by form feed function.

Web Optimization

Optimizing PDF files reduces their file sizes and prepares them for page-at-a-time downloading. Page-at-a-time downloading enables PDF files to appear quickly.

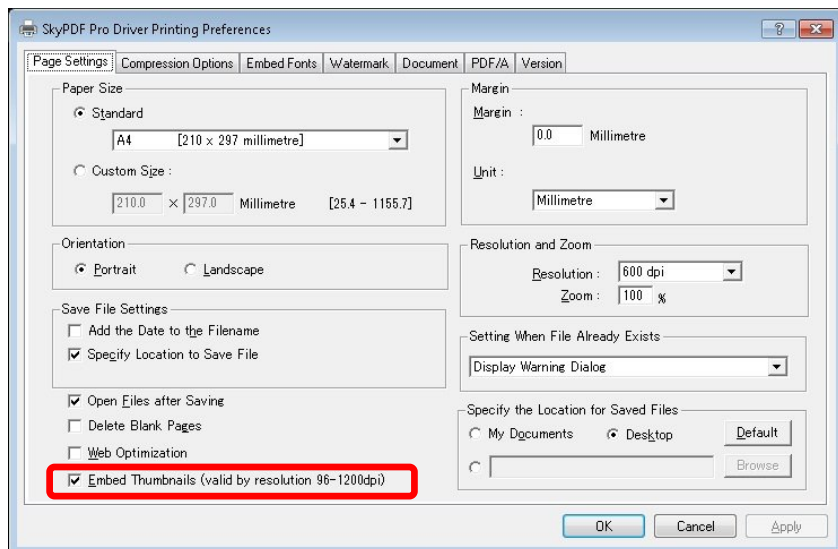
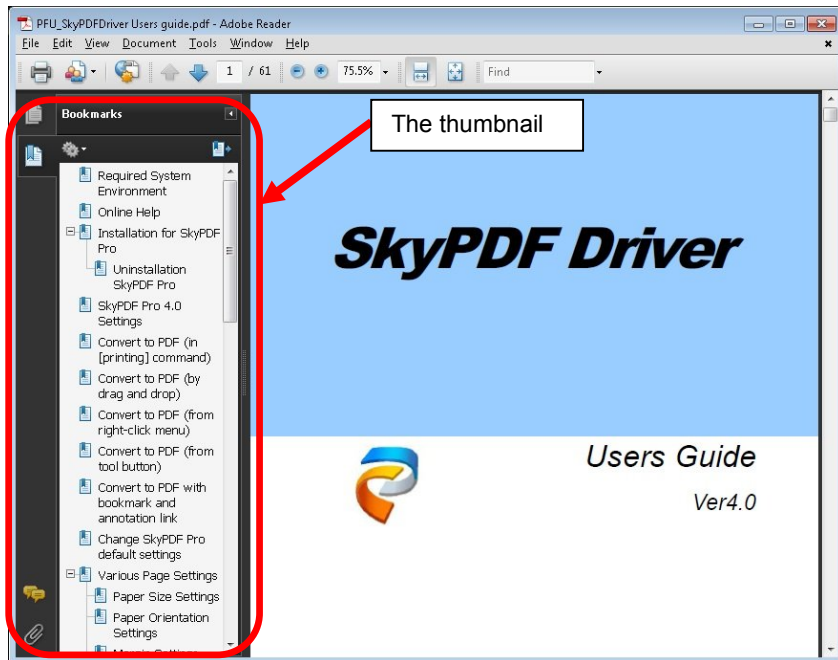
■Attention■

The function is not available if the size of the converted PDF file is under 5 KB.



Embed Thumbnail Images

Check here to embed thumbnail images to the new PDF file.



■Note■

The above screen is used as an example of Adobe Reader9.0

■Attention■

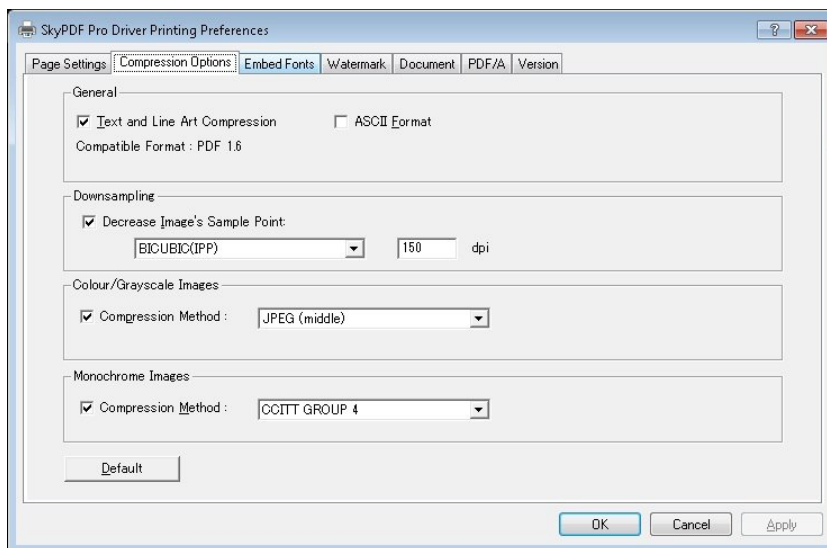
*It may take some time until the navigator menu is viewed in the case of non-thumbnail PDF with many pages.

*Resolution level of the Graphic field is valid from 96 to 1200dpi.

If you embed thumbnails, you can select thumbnail in the PDF viewer to display the correct page quickly.

Compression Option Settings

You can configure the settings for compression method of text and image in PDF files.



General pane:

You can configure the setting to compress text and line art, to output PDF file as text, and to decrease the image's sample point.

Text and Line Art Compression:

Check here to compress text and line art.

When you check Text and Line Art Compression, text and line art (drawings) in the original document will be compressed in Zip format. Specifying text and line art compression does not result in any degradation in the text and graphics.

ASCII Format:

Refer to "Output the PDF file in text format".

Compatible Format:

Currently, there is no selection here. The PDF file which SkyPDF PRO creates complies with PDF1.4.

■Note■

The followings are treated as image: scanned text and graphics, test and graphics created by photo edit software. It may not support zip format depending on the type and version of PDF viewer.

Downsampling pane:

Specify interpolation and resolution for downsampling. If you specify interpolation and resolution for downsampling, and if the original document has images of higher resolution than that which is specified, then the number of pixels will be reduced down to the specified resolution using the specified interpolation. The resolution can be specified using number of pixels per inch (dpi).

Decrease Image's Sample Point:

Check here if you want to use downsampling, and select interpolation from the box at the right.

Interpolation method	Details
BILINEAR	Calculate an average with neighbouring pixels and replace all the colours in the area with the calculated average pixel colour of the specified resolution. The quality of the resulting image is worse than bicubic, but the amount of data can be reduced.
BICUBIC	Similar operation as bilinear, but bicubic will use a wider area. You can obtain images with a smoother gradation at the expense of a large amount of data.
SUPER SAMPLING, in case (IPP)(IPPsharp) are attached in the above	This is a method incorporating the Intel Corporation's Intel IPP Library.

Color/Grayscale Images pane:

You can specify the compression method for color image and grey scale image.

Compression Method:

Check here, if you want to compress a colour image or grey scale image, and select the appropriate compression method in the right box.

Compression Method	Details
JPEG2000	It is realized both improvement in image quality and compression rate, evolution of JPEG. JPEG2000 (lowest) applies maximum compression and JPEG2000 (highest) applies minimum compression. The size of the file can be reduced by compression, but the image degrades when compression is increased.
JPEG	This is suitable for an image with high resolution and large file size, or graduated pixel images such as photographs, etc. JPEG (lowest) applies maximum compression and JPEG (highest) applies minimum compression. The size of the file can be reduced by compression, but the image degrades when compression is increased.
Zip	This is suitable for comparatively small images with many components of uniform density and without graduation such as illustrations and screen shots, etc. There is no image quality degradation in Zip compression, but the compression rate is low and the file size will be large.

Monochrome Images pane:

You can specify the compression method for black and white images. A black and white image is one that is composed only of black and white. Grey is not included.

Compression Method:

Check here to compress black and white images, and select the appropriate compression method in the right box.

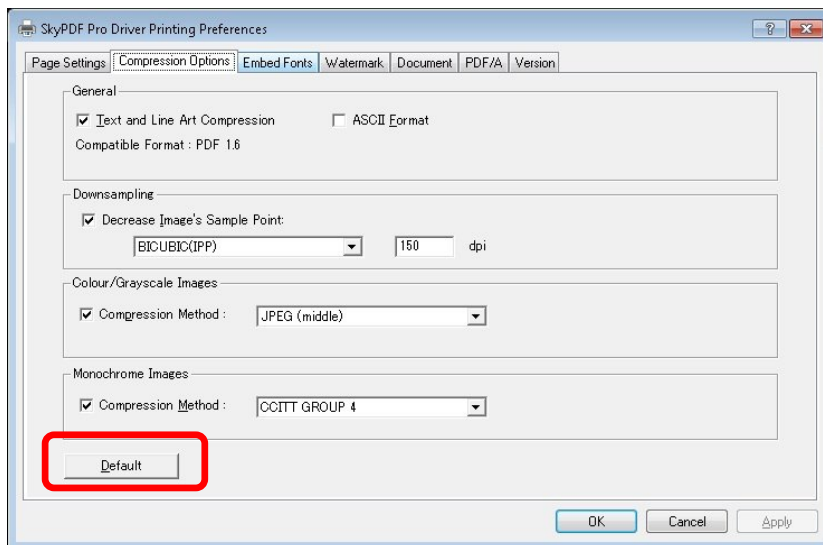
Compression Method	Details
CCITT Group 3/CCITT Group 4	These are the methods that are used for fax transmission and suitable for monochrome documents created using paint software, etc. There is no loss of data by compression, and they are compatible with most compressed images. CCITT Group 4 has an effective compression three times greater than CCITT 3.
Zip	This is suitable for monochrome images which have black and white components separated into fine detail.
Run Length	This is suitable for monochrome images where black and white components have broad variation.
JBIG2	This is best compression method for reducing the file size of black and white images.

■Attention■

It displays "PDF1.6" as compatible format in compression option tab, however, converted PDF version is mainly as PDF1.4, PDF1.5 on the setting of JPEG2000, PDF1.6 on the setting of 128bitAES security.

Reset the Compression Option Settings

Click here to reset the compression settings of the text and images to their default settings.



Settings	Default Value
Text and Line Art Compression	Zip
Colour/Grayscale Images	JPEG(middle)
Monochrome Images	CCITT Group4
Decrease Image's Sample Point	Downsample the colour/grey scale or monochrome images up to 150 dpi using bicubic (IPP).

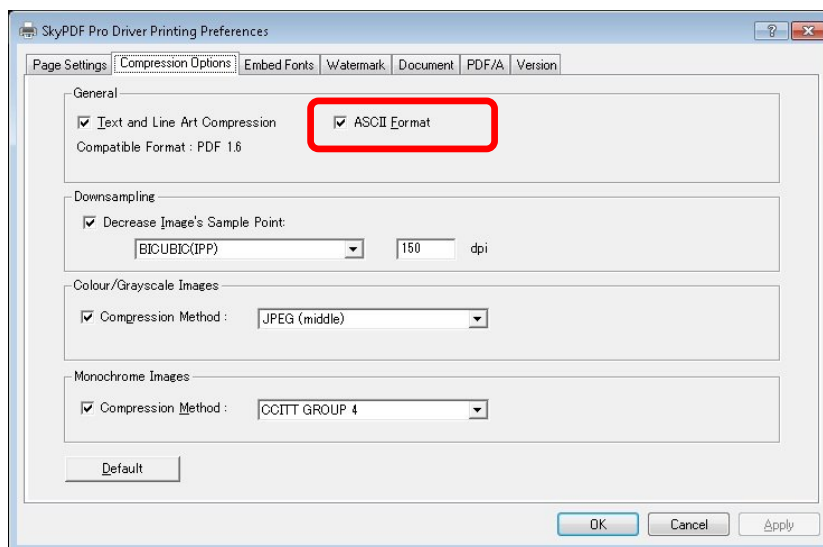
■Note■

If you click Default, then ASCII Format will be checked off.

Output the PDF file in text format

Check here to output the PDF file in ASCII 7 bit text format.

The PDF file output in ASCII text format can then be displayed and edited using a text editor, etc.



When ASCII format is not checked, the PDF file is output in binary format. There are usually no problems with the binary format.

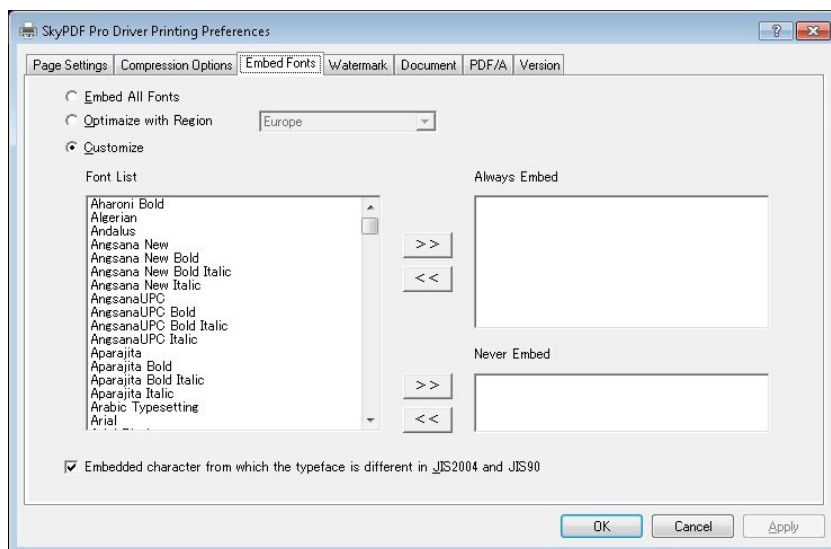
Outputting in ASCII format causes a larger file size compared to binary format.

Embedding Fonts

Check this option, if you want to embed all TrueType, Open Type, or Type 1 fonts used in the original document to the PDF file. This enables the PDF file to display in the same font and layout as the original document, even if the receiving environment does not have the original fonts.

■Note■

If the original font is not embedded into the PDF file, and the font used in the PDF file is not detected at display time, then that font would be automatically replaced by a font which resembles the missing one. If a substitute font is used, the character spacing may become wider or narrower (line breaks are maintained as is).



Embed All Fonts:

If Embed All Fonts is checked, it could result in a greatly increased PDF file size. It is better to assess which fonts are likely to be available in the display environment. Then you do not need to use Embed All Fonts, but select only specific fonts from the original document so that the file size can be reduced.

■Note■

See Windows Utility to check the installed TrueType font, Open Type font and Type1 font.

The Font List displays all of the fonts installed in your computer; select fonts to be embedded or not to be embedded from the Font List and click the ">>" button for either the Always Embed list or the Never Embed list.

■Note■

It is the only installed fonts to be displayed in Font List, and fonts which are not allowed to be embedded will not be listed in the Font List.

Optimize with Region:

When you check the Optimize with Region option with Embed All Fonts checked, two selections, Europe and Japan will become available.

Select the region of the system environment to display PDF files. The most appropriate fonts for the operating system of each region will be embedded into the PDF file to display the PDF accurately; The Europe option is for the European operating system and the Japan option is for the Japanese operating system. The fonts which the receiving environment does not have will be embedded into the PDF files. For optimum performance, fonts which should not be embedded and do not need to be embedded into PDF for accurate display on the selected regional operation system are sorted and display in the Add Embed and Never Embed lists, respectively, depending on the selected region. All fonts in Font List will be embedded. If the user changes the Never Embed list, the mode will change to Customize with Embed All Fonts.

Customize:

When you check the Customize option with Embed All Fonts checked, it will able to change the Always Embed and Never Embed lists. The Always Embed list has no effect. The fonts in this list will be affected when only the Customize option is checked. Only the fonts in Font List will be embedded.

Always Embed:

The fonts to be embedded into the PDF file will be displayed in the Always Embed List. Only the fonts displayed in the Always Embed List will be embedded into the PDF file.

If you want to cancel embedding a font, select the font, and click the "<<" button to return the font to the Font List.

Never Embed:

The fonts which are not embedded into the PDF file will be displayed in the Never Embed list. Those fonts will not be embedded into the PDF file.

Embedded character from which the typeface is different in JIS2004 and JIS90:

This box is selected by default, but when using a PC with JIS004 font installed, please select this setting so that your file can be displayed on another PC.

■Attention■

*The setting will be completed when you press the OK button. Therefore, the default setting will appear each time when you reselect one of the following options: Embed All Fonts, Optimize with Region and Customize, before you press the OK button. For example, even though you have selected Customize option and moved fonts to the Always Embed or Never Embed list with the ">>" button, that setting will return to the default when you select Customize option again after choosing other options, All Embed Fonts or Optimize with Region.

*Fonts which are not allowed to be embedded will not be embedded, even if Embed All fonts is checked.

Adding Watermark

Select Text to insert a text watermark, or select Image to insert an image watermark. Select None for no watermark.

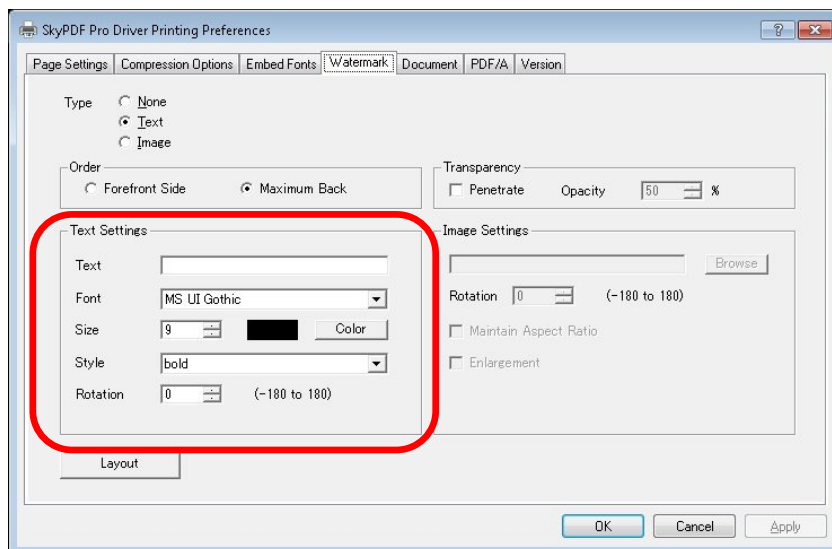
■Attention■

*The watermark is inserted into all the pages.

*When inserting a watermark, care should be taken to consider the colour of character strings etc., of the original document. For example a watermark containing thick black colour may obscure some character string which is also in black.

Text Settings pane:

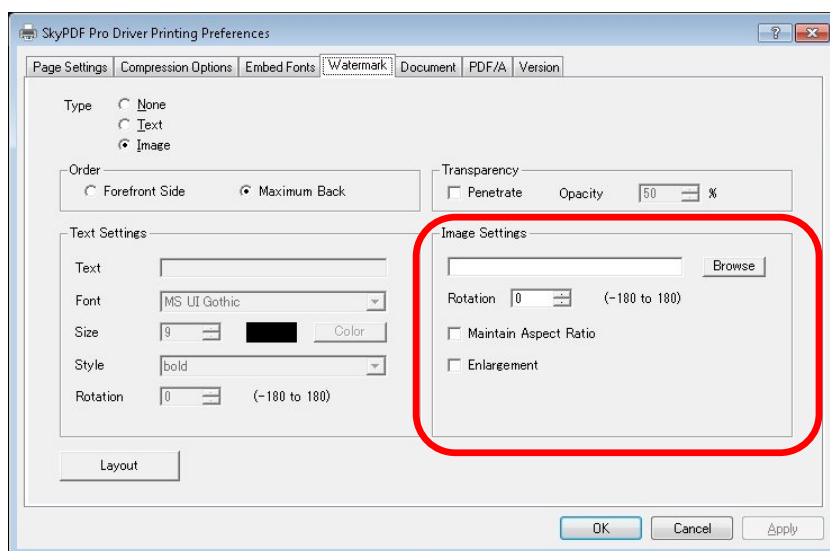
You can enter text to be inserted as a watermark, and specify font, size, etc. Please select Text in Type, beforehand.



Setting Items	Details
Text	Enter text to be inserted as a watermark.
Font	Select the font for the text string.
Size	Select a size for the font.
Color	Clicking here will display a Colour dialog box where you can select the colour for the string or create a custom colour.
Style	Select the font style from Normal / Bold / Italic / Bold Italic.
Rotation	This specifies the rotation of the character string right or left. A negative value causes a clockwise rotation and a positive value causes an anticlockwise rotation.

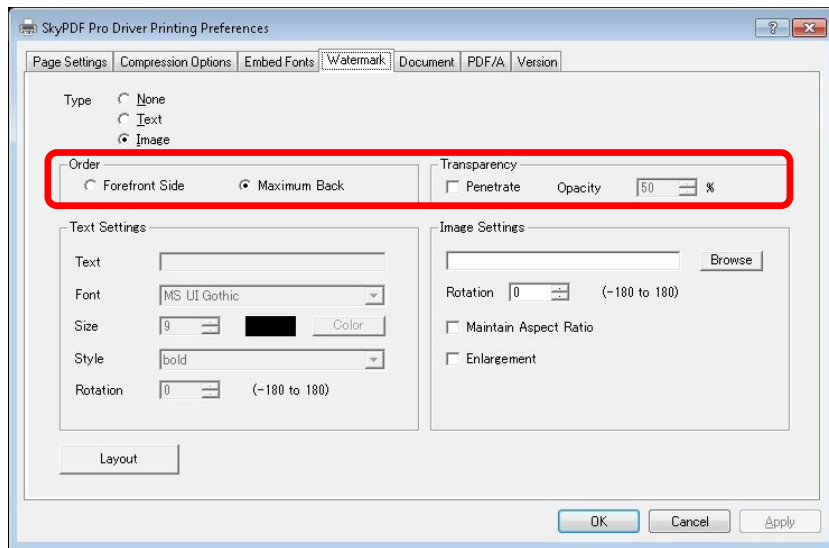
Image Settings pane:

You can select the image to be inserted as a watermark, and specify rotation, etc. Please select Image in Type, beforehand.



Setting Items	Details
File Name (Browse)	The file name and path for the image can be entered directly into the box, or click on Browse to find the file.
Rotation	This specifies the rotation of the image right or left. A negative value causes a clockwise rotation and a positive value causes an anticlockwise rotation.
Maintain Aspect Ratio	Check this box to maintain the length and width aspect ratio, when the image size is changed. This will ensure no distortion of the image, even when the size is changed.
Enlargement	Check here to expand the image to fill the entire page. When this box is checked, the position and size of the image cannot be specified.

Order and Transparency:



If the Forefront Side in Order pane is selected, the watermark appears above the original document.

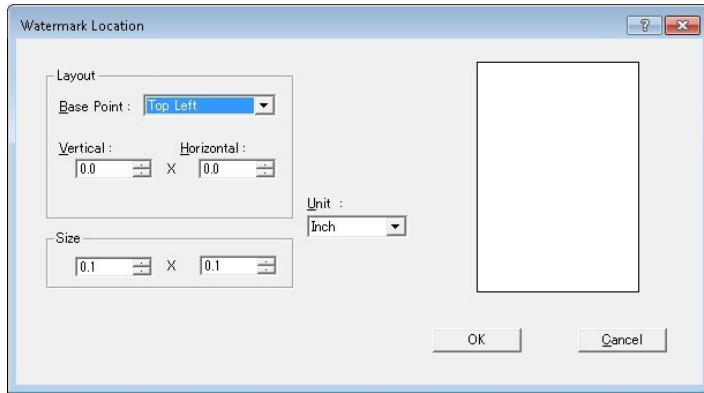
To regulate transmissivity of the watermark, check the Penetrate in the Transparency pane and select a value in the transmissivity field.

0% = The watermark is transparent

100% = The watermark is not transparent.

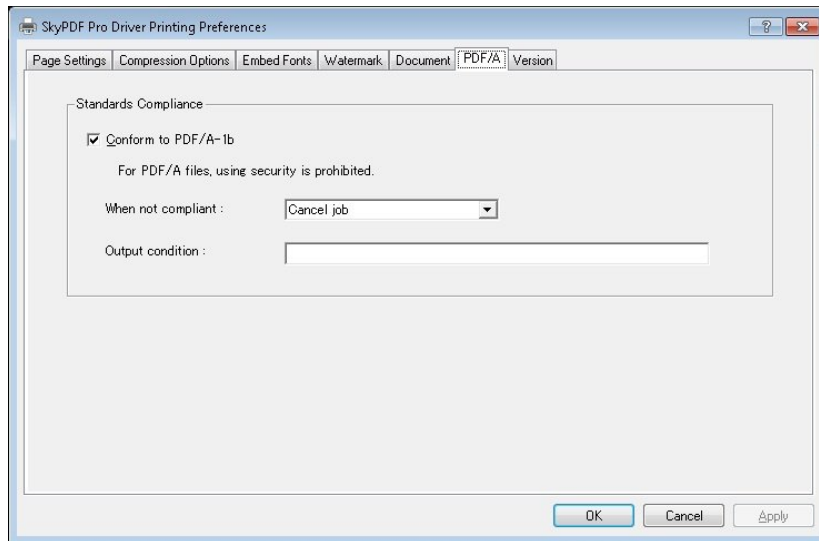
Layout:

Click here to display the Watermark Location dialog box. You can configure location or size of the inserted text or image.



Converting PDF file as PDF/A-1b documents

PDF/A-1b documents are intended for long term archiving and contain information required to produce document content consistently. You can get more information about PDF/A standards at <http://www.aiim.org/standards>.



Conform to PDF/A-1b:

Activate the checkbox in order to create PDF/A-1b files.

Please be aware that PDF/A files cannot be created using one or more of the following settings:

- Security

Moreover, all fonts used in the original document will be embedded into the PDF/A file to be created.

When not compliant:

You can specify what is to be done in case the document does not conform to the PDF/A-1b standard.

Continue:

This option will create a PDF file that will not fulfill the requirements established in the PDF/A-1b standard.

Cancel Job:

No PDF file will be created.

■Attention■

*Check [Conform to PDF/A-1b] to convert PDF file embedded with fonts and metadata.

*[Conform to PDF/A-1b] is not supported simultaneous use to following functions: Security Settings, Downsampling JPEG2000, Settings watermark except for 100%, Web Optimization and Append the PDF File to the Existing PDF File. If you try the above, the error message is displayed.

*If you convert PDF file as PDF/A-1b, msxml6 must be installed. Refer to the below URL.

Reference:

Microsoft Core XML Services (msxml)6.0

<http://www.microsoft.com/downloads/details.aspx?FamilyID=993c0bcf-3bcf-4009-be21-27e85e1857b1&displayLang=ja>

<http://www.microsoft.com/downloads/en/details.aspx?FamilyID=993c0bcf-3bcf-4009-be21-27e85e1857b1>

Simplified Chinese

<http://www.microsoft.com/downloads/zh-cn/details.aspx?FamilyID=993c0bcf-3bcf-4009-be21-27e85e1857b1>

Traditional Chinese

<http://www.microsoft.com/downloads/zh-tw/details.aspx?FamilyID=993c0bcf-3bcf-4009-be21-27e85e1857b1>

The print job will be cancelled and an error message will be displayed if PDF/A-1b standards cannot be met. No PDF file will be created in this case.

Print jobs will be cancelled in the following conditions:

1. if a font must not be embedded into the PDF file;
2. if the ICC profile cannot be found in registry;
3. if the ICC profile does not exist in SkyPDF's program folder.

Remark: An ICC profile is a set of data which characterizes a color device, or a color space, according to the standards defined by the *International Color Consortium* (ICC).

Output condition:

You can input the intended printing condition. This entry can be useful for the intended PDF recipients.

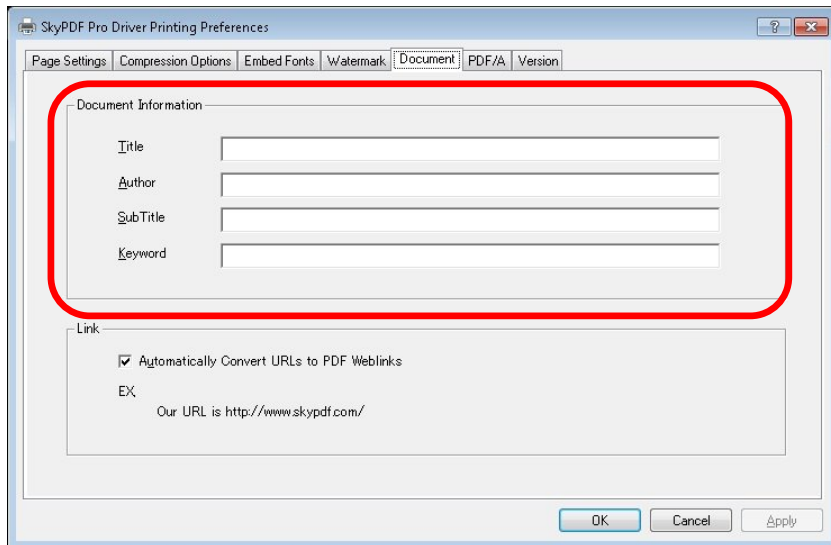
Enter arbitrary character string to [Output condition:] field.

Default value: Blank Possible number of characters: 255

Adding Document Information

When showing document properties of a PDF file in the PDF Viewer, the document information can be granted to the PDF file.

Enter an arbitrary string of characters in each of the following: [Title], [Author], [Subtitle] and [Keyword]



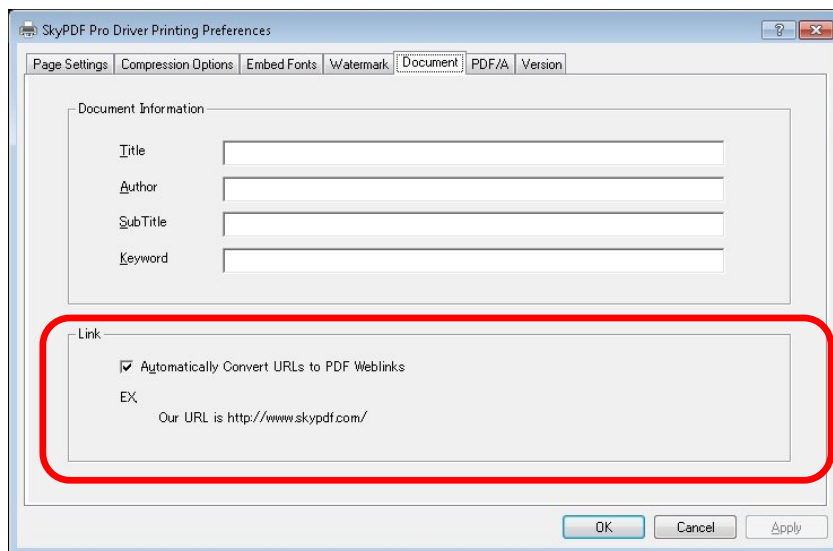
■Attention■

The document information on the original application including MS Word cannot be recognized.

Automatically Converting URLs and Mail address to PDF Weblinks

Automatically convert URLs to PDF Weblinks.

Check here if you want URLs and mail addresses included in the original document to be converted automatically into hyperlinks.



■Attention■

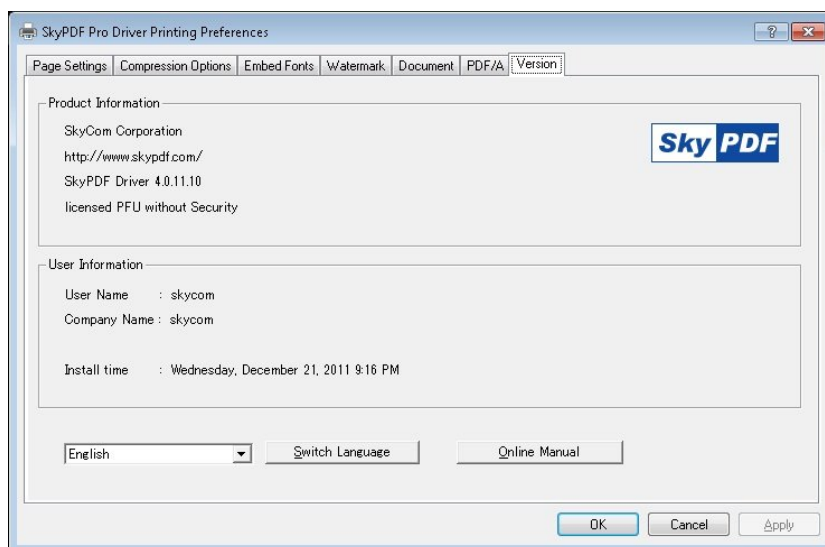
*A character string beginning with "http://", "https://", and "ftp://" will be recognized as URLs. A character string beginning with "mailto:" and written in "XXX@XXX.XXX" format will be recognized as mail addresses. The character string should consist of alpha-numeric and symbol characters.

*The URL link across pages is not supported. Convert PDF by Bookmark PDF button in Add-in too menu to reflect multi-line URL with hyperlink. The other operation is not available.

* In Adobe Acrobat 7.0 or Adobe Reader 7.0, the URLs and mail addresses in the PDF file will be processed as links automatically. Therefore, if it is obvious that the reader of the PDF file will use Adobe Acrobat 7.0 or Adobe Reader 7.0, then you need not configure this setting.

Confirming the Product and the User Information Details for SkyPDF Pro

You can display and check the version and license of SkyPDF Pro Driver.



Switch Language:

It is displayed in the changed language.

When the dialog is newly opened, the setting here is applied. There is no influence in the display of the dialog opened now.

Online Manual:

When you click Online Manual, the SkyPDF Pro Driver online help will be displayed.

SkyPDF Driver Users Guide

March 5, 2012

Published by SKYCOM corporation.

Printed in Japan

